

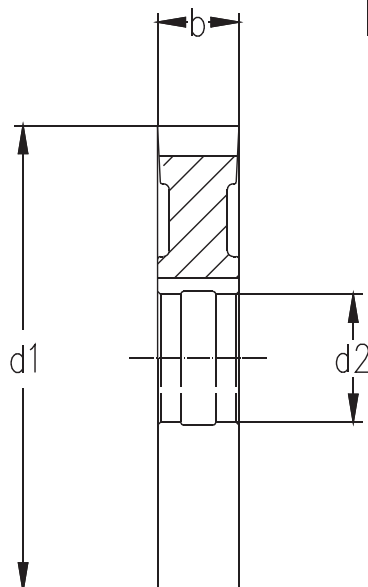
d1 js 16 pol	b k 11 pol	d2 H7 pol
2	1/8	5/8
	3/16	
	1/4	
	5/16	
	3/8	
2 1/2	3/16	7/8
	1/4	
	5/16	
	3/8	
	7/16	
	1/2	
3	3/16	1
	1/4	
	5/16	
	3/8	
	7/16	
	1/2	
	9/16	
	5/8	
	3/4	
3 1/2	3/16	1
	1/4	
	5/16	
	3/8	
	1/2	
	5/8	
	3/4	
4	3/16	1 1/4
	1/4	
	5/16	
	3/8	
	7/16	
	1/2	
	9/16	
	5/8	
	3/4	
	7/8	
	1	

d1 js 16 pol	b k 11 pol	d2 H7 pol
5	3/16	1 1/4
	1/4	
	5/16	
	3/8	
	7/16	
	1/2	
	5/8	
	3/4	
	7/8	
	1	
6	3/16	1 1/4
	1/4	
	5/16	
	3/8	
	7/16	
	1/2	
	5/8	
	3/4	
	7/8	
	1	
	1 1/4	
8	3/8	1 1/2
	7/16	
	1/2	
	5/8	
	3/4	
	7/8	
	1	
	1 1/4	

d1 js 16 mm	b k 11 mm	d2 H7 mm
50	4	16
	5	
	6	
	8	
	10	
63	4	22
	5	
	6	
	8	
	10	
	12	
	14	
	16	
	18	
80	5	27
	6	
	8	
	10	
	12	
	14	
	16	
	18	
	20	
100	6	32
	8	
	10	
	12	
	14	
	16	
	18	
	20	
	22	
	25	
125	6	32
	8	
	10	
	12	
	14	
	16	
	18	
	20	
	22	
	25	
	28	
150	6	32
	8	
	10	
	12	
	14	
	16	
	18	
	20	
	22	
	24	
	26	
	28	

d1 js 16 mm	b k11 mm	d2 H7 mm
160	8	40
	10	
	12	
	14	
	16	
	18	
	20	
	22	
	25	
	28	
	32	
200	8	40
	10	
	12	
	14	
	16	
	18	
	20	
	22	
	25	
	28	
	32	
250	10	40
	12	
	14	
	16	
	18	
	20	
	25	
	28	
	32	

(HSS)



1202
DIN 885 B-H
dentes retos



1212
DIN 885 A-H
dentes cruzados, alternados
ângulo de hélice ~ 8°

Fresa circular, corte 3 lados.

Ex. de especificação: 1212 - 3" x 1/4" x 1"